



## GALLERY ADDRESS:

3 Edinburgh Place, Central, Hong Kong

## OPENING HOURS:

10:00 - 18:00 daily

Closed on Tuesdays (except Public Holidays)

and the first two days of the

Chinese New Year

## FREE ADMISSION

## FACILITIES

### 1 Multi-purpose Hall

With a seating capacity of 180, the Multi-purpose Hall provides a venue for conferences, meetings and public consultation forums on planning and infrastructure development proposals.

### 2 Resource Centre

Books and journals relating to planning and infrastructure in a comfortable and welcoming setting are available for public reading.

### 3 Thematic Exhibition Area

In order to bring in more interesting and special exhibitions for visitors, the content of the Thematic Exhibition Area will be updated every two to three months.

### 4 Meeting Room

The Meeting Room on the third floor is fully equipped for hosting activities such as lectures, courses and workshops.



展城館  
CITY  
GALLERY

### Enquiries:

Tel: (852) 3102 1242

Fax: (852) 3104 0129

Email: [enquiry@citygallery.gov.hk](mailto:enquiry@citygallery.gov.hk)

Website: [www.citygallery.gov.hk](http://www.citygallery.gov.hk)



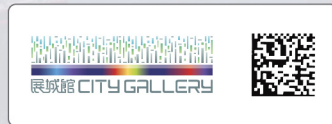
## WELCOME TO CITY GALLERY

Being the first planning and infrastructure gallery in Hong Kong, the City Gallery presents a unique mix of fun yet educational exhibits showcasing major planning proposals, infrastructure projects and shows our city's future development outlook.



## QR CODE CARD

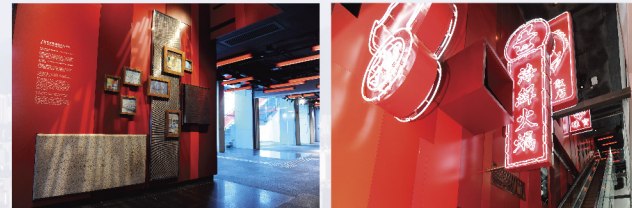
Get your QR Code Card at the Reception Counter. It will save your time in activating some of our exhibits.



## GROUND FLOOR

This floor presents a brief history of the Gallery and exhibits the comparison of Hong Kong with other world cities in respect of built up area, population and tallest buildings.

Through a series of videos and audios as well as special settings, the theme of "Unique Hong Kong" interlinks with various exhibition zones at different floors.



- 1 History Wall
- 2 Reception Counter
- 3 Great World Cities
- 4 Unique Hong Kong
- 5 Thematic Exhibition

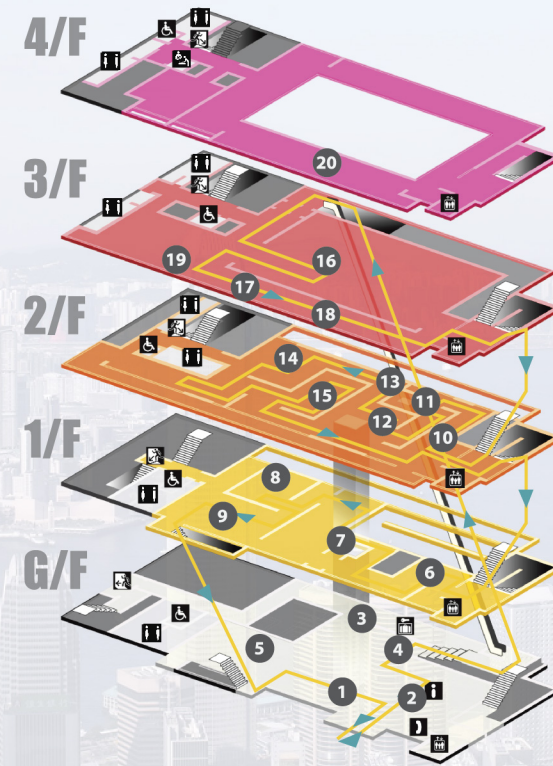
## FIRST FLOOR

With various interactive exhibits, this floor showcases the principles of urban design and provides information on sustainable development. The heritage area and the colourful dreamscape zone demonstrate the contrasting past and future of Hong Kong.



- 6 Unique Hong Kong
- 7 Living Environment
- 8 Protecting Our Heritage
- 9 Hong Kong Next Century

## FLOOR PLAN



- Lift
- Toilet
- Toilet for People with Disabilities
- Reception
- Lockers
- Baby Caring Room
- Public Telephone
- Emergency Exit
- Recommended Visiting Route

## SECOND FLOOR

Fun yet informative exhibits on planning strategy, transport and communication networks, urban greenery as well as natural resources in Hong Kong are available here.



- 10 Unique Hong Kong
- 11 Photo Booth
- 12 Strategic Picture
- 13 Strategic Infrastructure
- 14 Transport and Communications
- 15 Sustainable Hong Kong

## THIRD FLOOR

The 17-minute show takes you to the journey of experiencing an audio visual introduction on the remarkable past development and planned future of Hong Kong. The exhibition corridor also showcases the planning history and planning process of Hong Kong.



- 16 Main Show (Multi-purpose Hall)
- 17 Planning Process
- 18 History (Coastline and Skyline)
- 19 Meeting Room

## FOURTH FLOOR

- 20 Resource Centre